

PALM BEACH FARMS COMPANY, PLAT NO 3  
PLAT BOOK 2, PAGES 45 - 54 (INCLUSIVE)

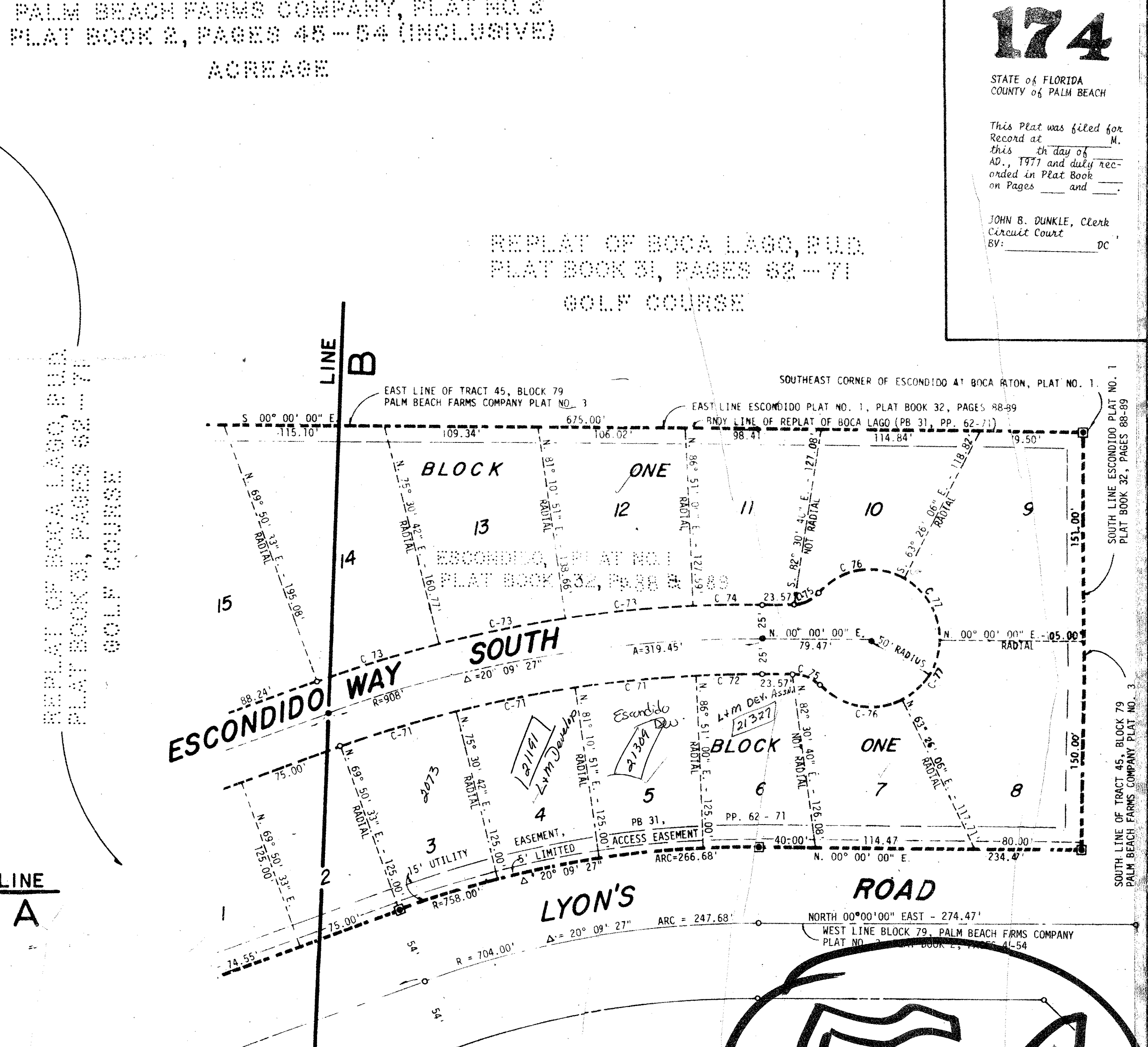
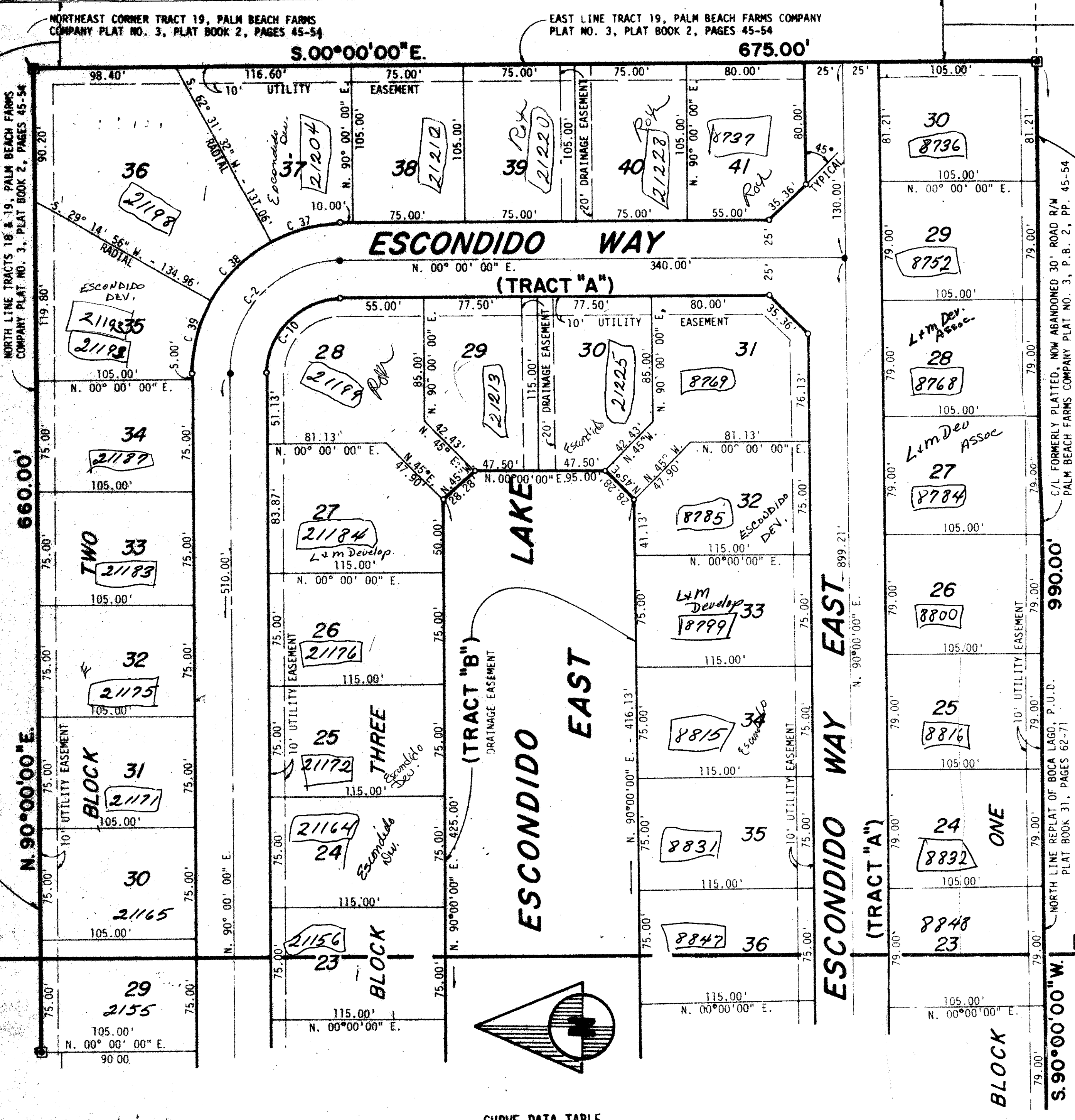
174

STATE OF FLORIDA  
COUNTY OF PALM BEACH

This Plat was filed for  
Record at \_\_\_\_\_ M.  
this \_\_\_\_\_ day of  
AD, 1977 and duly recorded  
in Plat Book \_\_\_\_\_  
on Pages \_\_\_\_\_ and \_\_\_\_\_

JOHN B. DUNKLE, Clerk  
Circuit Court  
BY: \_\_\_\_\_ DC

REPLAT OF BOCA LAGO, PUD.  
PLAT BOOK 31, PAGES 62 - 71  
GOLF COURSE



CURVE DATA TABLE

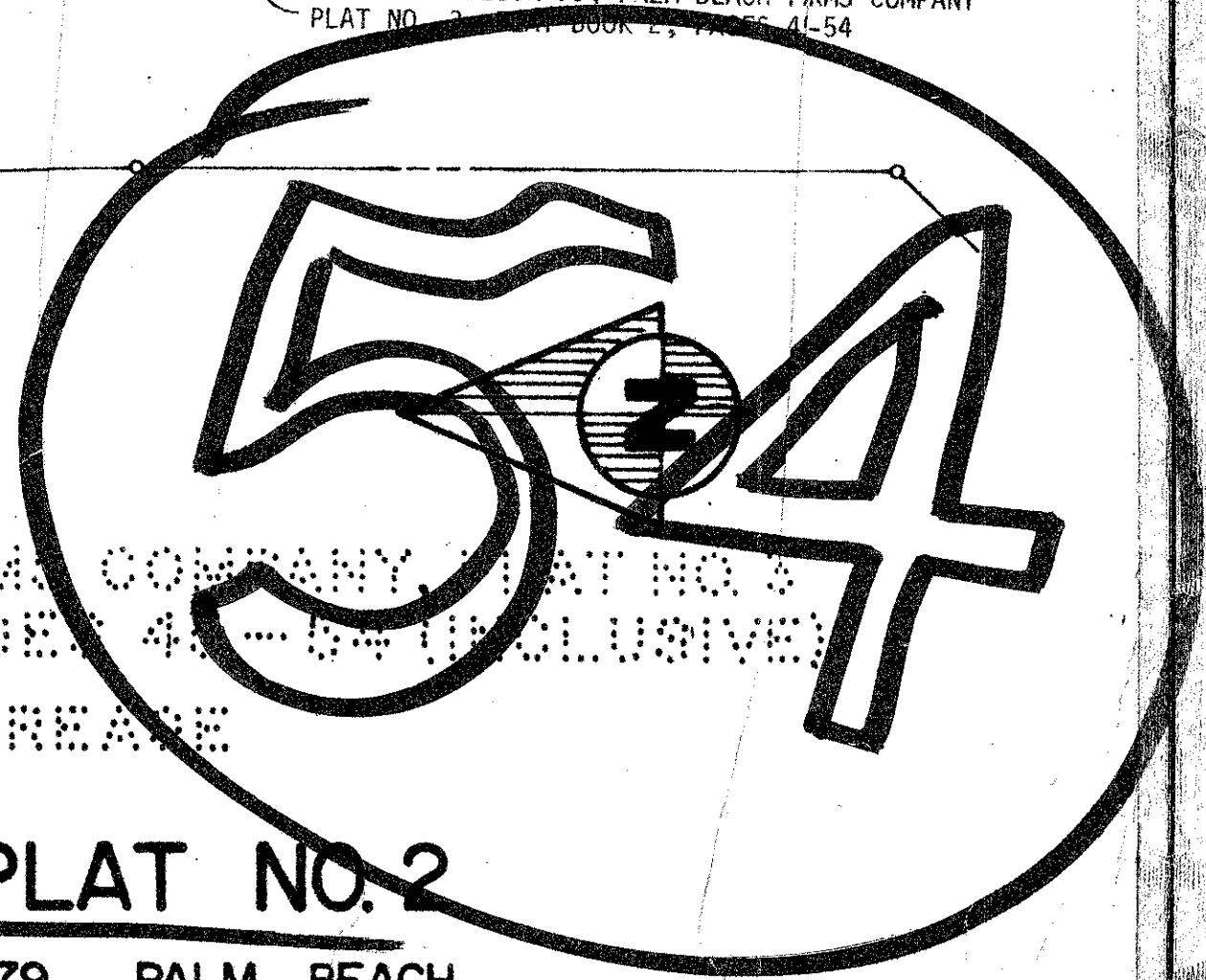
C	RADIUS	CENTRAL ANGLE	CHORD BEARING	CHORD	ARC	TANGENT	C	RADIUS	CENTRAL ANGLE	CHORD BEARING	CHORD	ARC	TANGENT
1	496.02'	13° 47' 30"	N. 83° 08' 15" E.	119.11'	119.40'	59.99'	43	100.00'	31° 07' 34"	N. 52° 50' 00" W.	53.66'	54.33'	27.85'
2	75.00'	90°	N. 45° W.	106.07'	117.81'	75.00'	44	100.00'	21° 36' 13"	N. 79° 11' 54" W.	37.48'	37.71'	19.08'
3	75.00'	90°	N. 45° E.	106.07'	117.81'	75.00'	45	100.00'	21° 20' 15"	S. 79° 19' 53" W.	37.03'	37.24'	18.84'
4	75.00'	87° 52' 45"	N. 46° 03' 38" E.	104.09'	115.03'	72.27'	46	100.00'	34° 39' 01"	S. 51° 20' 15" W.	59.56'	60.48'	31.20'
5	908.00'	28° 14' 36"	S. 16° 14' 33" W.	443.07'	447.59'	228.44'	47	100.00'	31° 53' 29"	S. 18° 04' 00" W.	54.95'	55.66'	28.57'
6	250.00'	50° 31' 18"	N. 05° 06' 12" E.	213.37'	220.44'	117.97'	48	883.00'	05° 40' 17"	S. 04° 57' 24" W.	87.37'	87.40'	43.74'
7	471.02'	13° 37' 08"	N. 83° 16' 26" E.	110.34'	110.59'	55.55'	49	883.00'	05° 40' 17"	S. 10° 37' 41" W.	87.37'	87.40'	43.74'
8	521.02'	08° 22' 48"	N. 80° 05' 36" E.	76.14'	76.20'	38.17'	50	883.00'	05° 40' 17"	S. 16° 17' 58" W.	87.37'	87.40'	43.74'
9	521.02'	05° 43' 06"	N. 87° 08' 27" E.	51.98'	52.00'	26.02'	51	883.00'	05° 40' 17"	S. 21° 58' 15" W.	87.37'	87.40'	43.74'
10	50.00'	90°	N. 45° W.	70.71'	78.54'	50.00'	52	883.00'	05° 33' 28"	S. 27° 35' 07" W.	85.62'	85.65'	42.86'
11	100.00'	42° 42' 47"	N. 68° 38' 37" W.	72.83'	74.55'	39.10'	53	275.00'	16° 16' 06"	S. 22° 13' 48" W.	77.82'	78.08'	39.31'
12	100.00'	42° 42' 47"	N. 25° 55' 50" W.	72.83'	74.55'	39.10'	54	275.00'	16° 16' 06"	S. 05° 57' 42" W.	77.82'	78.08'	39.31'
13	160.00'	04° 34' 26"	N. 02° 17' 13" W.	7.98'	7.98'	3.99'	55	275.00'	16° 16' 06"	S. 10° 18' 24" E.	77.82'	78.08'	39.31'
14	50.00'	87° 52' 45"	S. 46° 03' 38" W.	69.39'	76.69'	48.18'	56	275.00'	01° 43' 00"	S. 19° 17' 57" E.	8.24'	8.24'	4.12'
15	933.00'	02° 31' 22"	N. 03° 22' 56" E.	41.08'	41.08'	20.54'	57	400.00'	01° 43' 00"	S. 19° 17' 57" E.	11.99'	11.99'	5.99'
16	933.00'	04° 36' 25"	N. 06° 56' 50" E.	75.00'	75.00'	37.53'	58	400.00'	16° 16' 06"	S. 10° 18' 24" E.	113.19'	113.57'	57.17'
17	933.00'	04° 36' 25"	N. 11° 33' 15" E.	75.00'	75.02'	37.53'	59	400.00'	16° 16' 06"	S. 05° 57' 42" W.	113.19'	113.57'	57.17'
18	933.00'	04° 36' 25"	N. 16° 09' 40" E.	75.00'	75.00'	37.53'	60	400.00'	16° 16' 06"	S. 22° 13' 48" W.	113.19'	113.57'	57.17'
19	933.00'	04° 36' 25"	N. 20° 46' 05" E.	75.00'	75.00'	37.53'	61	758.00'	05° 33' 28"	S. 27° 35' 07" W.	73.50'	73.53'	36.79'
20	933.00'	04° 36' 25"	N. 25° 22' 11" E.	75.00'	75.00'	37.53'	62	758.00'	05° 40' 17"	S. 21° 58' 15" W.	75.00'	75.03'	37.55'
21	933.00'	02° 41' 08"	N. 29° 01' 17" E.	43.73'	43.73'	21.87'	63	758.00'	05° 40' 17"	S. 16° 17' 58" W.	75.00'	75.03'	37.55'
22	225.00'	11° 19' 12"	N. 24° 42' 15" E.	44.38'	44.54'	22.30'	64	758.00'	05° 40' 17"	S. 10° 37' 41" W.	75.00'	75.03'	37.55'
23	225.00'	33° 54' 56"	N. 02° 05' 11" E.	131.25'	133.19'	68.61'	65	758.00'	02° 07' 15"	S. 04° 57' 24" W.	75.00'	75.03'	37.55'
24	225.00'	05° 17' 10"	N. 17° 30' 52" W.	20.75'	20.76'	10.39'	66	758.00'	02° 07' 15"	S. 01° 03' 37" W.	28.06'	28.06'	14.03'
25	120.00'	05° 17' 10"	N. 17° 30' 52" W.	11.07'	11.07'	5.54'	67	521.02'	06° 03' 34"		55.12'	55.12'	27.58'
26	110.00'	33° 54' 56"	N. 02° 05' 11" E.	64.17'	65.11'	33.54'	68	471.02'	06° 42' 20"		55.12'	55.12'	27.58'
27	110.00'	02° 41' 08"	N. 24° 42' 15" E.	21.70'	21.73'	10.90'	69	758.00'	05° 40' 09"		75.00'	75.00'	37.53'
28	1048.00'	02° 41' 08"	N. 29° 01' 17" E.	49.12'	49.12'	24.57'	70	758.00'	03° 09' 00"		41.68'	41.68'	20.84'
29	1048.00'	04° 36' 25"	N. 25° 22' 31" E.	84.24'	84.27'	42.16'	71	758.00'	03° 09' 00"		87.37'	87.37'	43.72'
30	1048.00'	04° 36' 25"	N. 20° 46' 05" E.	84.24'	84.27'	42.16'	72	883.00'	03° 09' 00"		48.55'	48.55'	24.28'
31	1048.00'	04° 36' 25"	N. 16° 09' 40" E.	84.24'	84.27'	42.16'	73	933.00'	05° 40' 09"		92.32'	92.32'	46.20'
32	1038.00'	04° 36' 25"	N. 11° 33' 15" E.	83.44'	83.46'	41.75'	74	933.00'	03° 09' 00"		51.29'	51.29'	25.65'
33	1038.00'	04° 36' 25"	N. 06° 56' 50" E.	83.44'	83.46'	41.75'	75	25.00'	48° 11' 23"		21.03'	21.03'	11.18'
34	205.00'	04° 36' 25"	N. 02° 17' 13" W.	16.37'	16.37'	8.19'	76	50.00'	74° 45' 17"		65.24'	65.24'	38.20'
35	205.00'	42° 42' 47"	N. 25° 55' 50" W.	149.31'	152.02'	80.16'	77	50.00'	63° 26' 06"		55.36'	55.36'	30.90'
36	177.30'	42° 42' 47"	N. 68° 38' 37" W.	129.13'	132.17'	69.33'	78	275.00'	01° 43' 00"		8.24'	8.24'	4.12'
37	100.00'	27° 28' 28"	N. 13° 44' 14" W.	47.49'	47.98'	24.45'	79	400.00'	01° 43' 00"		11.99'	11.99'	5.99'
38	100.00'	33° 16' 36"	N. 44° 06' 46" W.	57.27'	58.08'	29.88'	80	275.00'	15° 37' 34"		75.00'	75.00'	37.53'
39	100.00'	29° 14' 56"	N. 75° 22' 32" W.	50.50'	51.05'	26.09'	81	400.00'	15° 37' 34"		109.09'	109.09'	54.89'
40	90.00'	90°	N. 45° W.	70.71'	78.54'	50.00'	82	496.02'	20° 09' 27"		174.51'	174.51'	127.38'
41	100.00'	95° 44' 21"	N. 02° 52' 11" W.	10.01'	10.02'	5.01'							
42	100.00'	31° 31' 52"	N. 21° 30' 17" W.	54.34'	55.03'	28.23'							

PALM BEACH FARMS COMPANY, PLAT NO 3  
PLAT BOOK 2, PAGES 45 - 54 (INCLUSIVE)

ESCONDIDO AT BOCA RATON, PLAT NO. 2

BEING A REPLAT OF A PORTION OF BLOCKS 78 AND 79, PALM BEACH FARMS COMPANY PLAT NO. 3, (PLAT BOOK 2, PAGES 45-54), LYING IN A PART OF SECTIONS 20 AND 21, TWP 47 SO., RGE. 42 E., PALM BEACH CO., FLORIDA.

0241-301  
20/21/47/42  
32  
No Flood Hazard  
174



CONRAD W. SCHAEFER CONSULTING ENGINEERS, INC.  
PALM BEACH COUNTY, FLORIDA

DATE: 2-16-77  
SCALE: 1" = 50'

THIS INSTRUMENT WAS PREPARED BY ROBERT J. WHIDDEN IN THE OFFICES OF BENCH MARK LAND SURVEYING AND MAPPING, PHONE 689-7111, FOR THE FIRM OF CONRAD W. SCHAEFER CONSULTING ENGINEERS, INC., 2001 PALM BEACH LAKES BOULEVARD, WEST PALM BEACH, FLORIDA, ZIP 33409.