

ESCONDIDO AT BOCA RATON, PLAT NO. 1

BEING A REPLAT OF A PORTION OF BLOCKS 78 AND 79, PALM BEACH FARMS COMPANY PLAT NO. 3, (PLAT BOOK 2, PAGES 45-54), LYING IN A PART OF SECTIONS 20 AND 21, TWP. 47 SO., RGE. 42 E., PALM BEACH CO., FLORIDA.
AUGUST, 1976

89

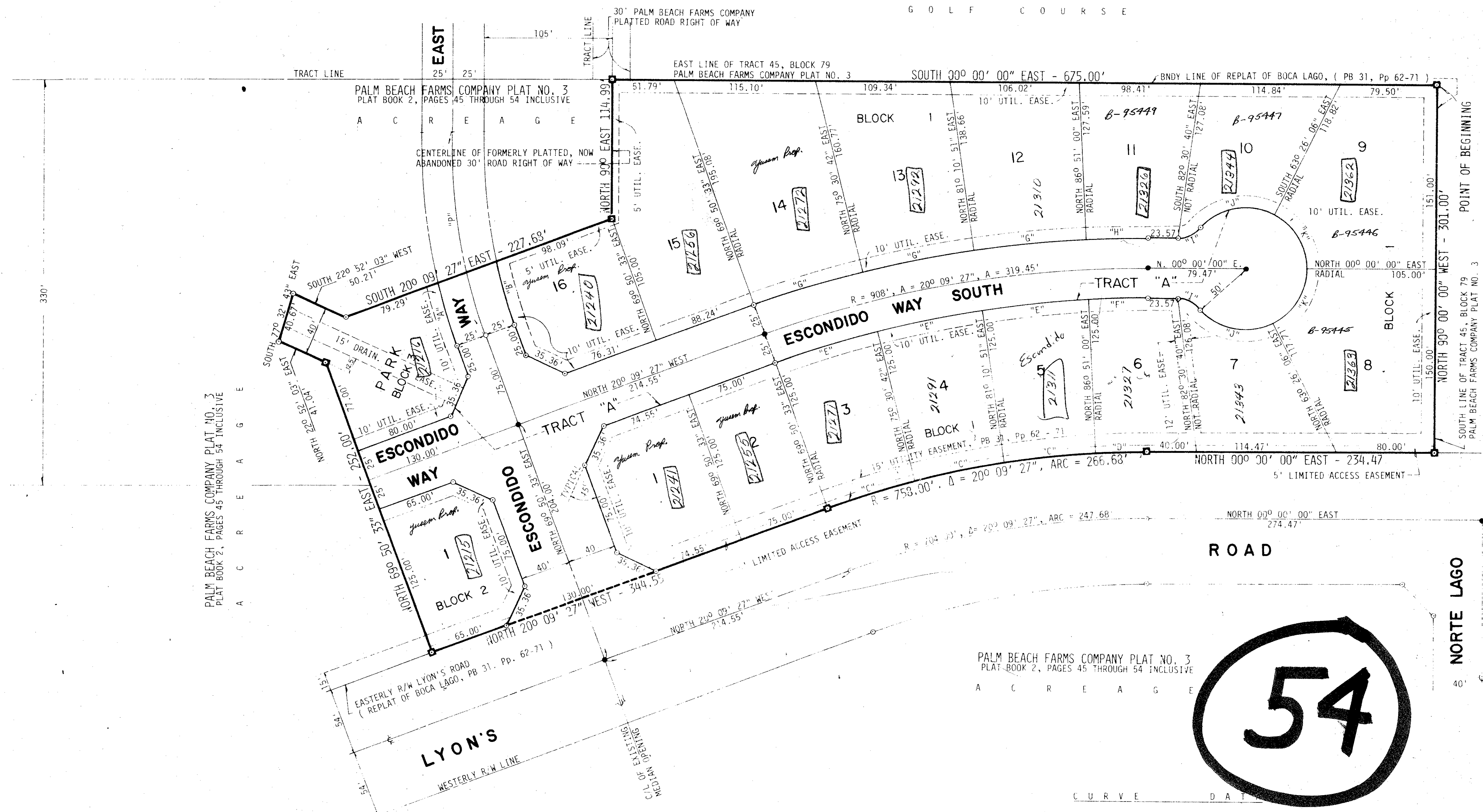
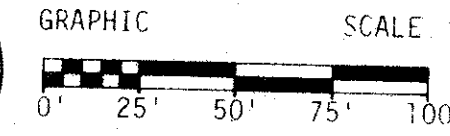
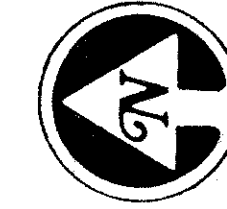
STATE OF FLORIDA
COUNTY OF PALM BEACH

This plat was filed for
Record at _____ M.
this _____ day of _____
AD., 1976 and duly rec-
orded in Plat Book _____
on Pages _____ and _____

JOHN B. DUNKLE, Clerk
Circuit Court
SV: _____ DC

REPLAT OF BOCA LAGO, PUD
PLAT BOOK 31, PAGES 62 - 71

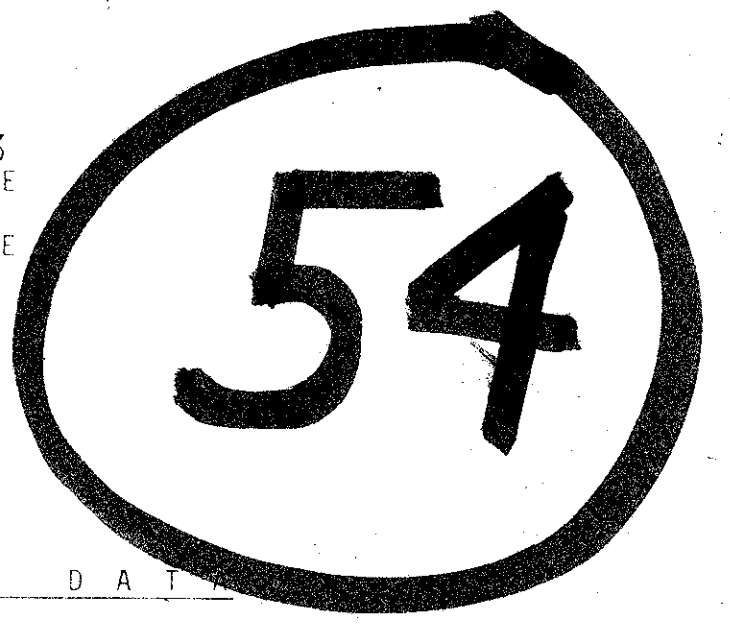
G O L F C O U R S E



PALM BEACH FARMS COMPANY PLAT NO. 3
PLAT BOOK 2, PAGES 45 THROUGH 54 INCLUSIVE

REPLAT OF BOCA LAGO, PUD
PLAT BOOK 31, PAGES 62 - 71

PALM BEACH FARMS COMPANY PLAT NO. 3
PLAT BOOK 2, PAGES 45 THROUGH 54 INCLUSIVE



32/89

| CURVE | RADIUS | CENT. ANGLE | ARC | TANGENT |
|-------|---------|-------------|--------|---------|
| "A" | 521.02' | 069 03' 34" | 55.12' | 27.58' |
| "B" | 471.02' | 069 42' 20" | 55.12' | 27.58' |
| "C" | 758.00' | 050 40' 09" | 75.00' | 37.50' |
| "D" | 758.00' | 030 09' 00" | 41.58' | 20.79' |
| "E" | 883.00' | 050 40' 09" | 43.2' | 21.6' |
| "F" | 883.00' | 030 09' 00" | 48.55' | 24.28' |
| "G" | 933.00' | 050 40' 09" | 92.32' | 46.20' |
| "H" | 933.00' | 030 09' 00" | 51.2' | 25.65' |
| "I" | 495.1' | 081 11' 00" | 21.1' | 11.18' |
| "J" | 495.1' | 068 36' 00" | 65.2' | 38.20' |
| "K" | 275.00' | 019 43' 00" | 17.24' | 8.62' |
| "L" | 275.00' | 019 43' 00" | 17.24' | 8.62' |
| "M" | 400.00' | 019 43' 00" | 11.89' | 5.99' |
| "N" | 275.00' | 159 37' 34" | 17.24' | 8.62' |
| "O" | 400.00' | 159 37' 34" | 109.0' | 54.89' |
| "P" | 496.02' | 209 09' 27" | 174.6' | 127.7' |

| AREA SUMMARY | |
|--------------------------|-------------------|
| TRACT "A" (PRIVATE ROAD) | 0.28 ACRES |
| TRACT "B" (BLOCK 3) | 0.28 ACRES |
| TRACT "C" (BLOCK 2) | 4.54 ACRES |
| TRACT "D" (BLOCK 1) | 0.24 ACRES |
| TRACT "E" (PRIVATE ROAD) | 1.37 ACRES |
| TOTAL AREA | 6.43 ACRES |

DENSITY THIS PLAT EQUALS 2.64 UNITS PER ACRE

ESCONDIDO at BOCA RATON

THIS INSTRUMENT WAS PREPARED BY ROBERT J. WHITTEN IN THE OFFICES OF BENCH MARK LAND SURVEYING AND MAPPING, PHONE 689-2111, FOR THE FIRM OF CONRAD W. SCHAEFER CONSULTING ENGINEERS, INC., 2001 PALM BEACH LAKES BOULEVARD, WEST PALM BEACH, FLORIDA, 33409.

BENCH MARK
land surveying and mapping, inc.

CONRAD W. SCHAEFER CONSULTING ENGINEERS, INC.
PALM BEACH COUNTY FLORIDA

ESCONDIDO AT BOCA RATON
PLAT NO. 1

| | | | |
|-------------|-------------|------------|--------------|
| PREPARED BY | DRAWN BY | CHECKED BY | DATE |
| CWS | RW | WVC | 7-9-76 |
| SCALE | APPROVED BY | FILE NO. | SHEET 2 OF 2 |
| 3" = 60' | CWS | 2305 | |